

# BUZZ-IN BORO

## Green space bee spotter guide

There are over 200 species of bees in the UK. The best way to identify them is to look at the colour and number of bands across their bodies. Use this guide to help.



Ashy mining bee\*  
Makes its nest underground



Buff tailed bumblebee



Common carder bumblebee  
(Male has facial hair)



Early bumblebee  
(Males have yellow facial hair)



Garden bumblebee  
Has a long tongue



Hairy footed flower bee  
(Males are lighter in colour)



Honeybee  
Carries yellow pollen on its legs



Red mason bee\*  
Makes holes in mortar



Red tailed bumblebee\*  
(Males have yellow facial hair)

Spend an hour in your garden or local green space and tell us what you find! We'll use this information to build a picture of what we have in our town.

Submit your results at: [www.middlesbrough.gov.uk/buzzboro](http://www.middlesbrough.gov.uk/buzzboro)

\* If you find these species, please also report them to the North East Bee Hunt! [buff.ly/3bpY9xu](http://buff.ly/3bpY9xu)

  
**Middlesbrough**  
moving forward

  
**BAREFOOT  
KITCHEN**



Tawny mining bee\*  
(Males are smaller and browner)



Tree bumblebee\*  
Can sometimes be all black



White tailed bumblebee  
(Males have yellow facial hair)



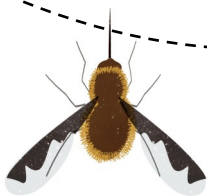
Willughby's leafcutter bee  
cuts perfect circles in leaves



Wool carder bee  
collect fibres from plants



Not bees!



Bee fly  
Hovering flight, high pitched buzz



Hoverfly  
Hovering flight, no sting!



Social wasp  
Chew wood to make paper nests

**BUZZ-IN BORO** is a project to increase and encourage bees and pollinating insects in Middlesbrough. This includes workshops, guides and changes to how our greenspaces are managed to improve biodiversity. To find out more, visit: [www.middlesbrough.gov.uk/buzzboro](http://www.middlesbrough.gov.uk/buzzboro)

Illustrations: [megandobbyn.co.uk](http://megandobbyn.co.uk)